

# Yearbook 2025



Community  
Foundation  
North East

## Advisors

**Auditors:** Azets Audit Services

**Bankers:** Barclays Bank plc

**Investment Managers:** Cazenove Capital, CCLA Investment Management Limited, Rathbone Investment Management Limited.

**Solicitors:** Muckle LLP

Financial information and grants statistics in the Yearbook relate to the financial year 2024-25. All other information has been updated to the time of going to press in October 2025.

Our grants data is available on our website

[www.communityfoundation.org.uk/about-us/our-data](http://www.communityfoundation.org.uk/about-us/our-data)  
and on 360Giving [grantnav.threesixtygiving.org](http://grantnav.threesixtygiving.org)

**Design and artwork:** Lisa Kirkbride

**Photography:** The Special Lioness, Jessica Wade-Slee, Northumberland County of Sanctuary, Chopwell Community Association, Children North East, Newcastle Building Society, Richard Roberts, Soroptimist International Tynemouth Whitley Bay and District, Gilbert Johnston, New Writing North, Natural Ability, Comfrey Project

**Cover image:** A young person engaged in an inclusive and accessible performing arts show in Sunderland run by The Special Lioness.

### Community Foundation North East

Philanthropy House, Woodbine Road  
Gosforth, Newcastle upon Tyne, NE3 1DD

**Tel:** 0191 222 0945

**Email:** [general@communityfoundation.org.uk](mailto:general@communityfoundation.org.uk)

[www.communityfoundation.org.uk](http://www.communityfoundation.org.uk)

**f in @ CommunityFoundationNorthEast**

Registered Charity No. 700510  
Limited Company No. 2273708  
Details of the Community Foundation's  
Privacy Policy can be found on our website.



This print is carbon captured. Printed on FSC® / PEFC™ certified paper,  
sourced sustainably and made carbon neutral through The Woodland Trust.

Local giving. Lasting impact.





# Welcome from the Chair and CEO

2025 is a major milestone: we've become Community Foundation North East and set out a new strategy to achieve our mission of building a thriving, generous and inclusive region.

Since our last strategy, we've increased grant-making and non-financial support for local charities and community organisations. We've mobilised resources around Covid, the cost-of-living crisis and poverty. We've grown giving and donor engagement. We've shone a light on issues through our Vital Signs research and heard from a thousand people in our On the Table conversations. And we've adopted a responsible investment approach to our endowment.

But we are ambitious to do more. Our new strategy draws on evidence, experience and listening to communities. Central to it is a clearer focus on five impact areas: tackle poverty, widen access to opportunity, improve health and community safety, strengthen culture and community life, and sustain our environment. Subject to review, this strategy will take us to at least 2028 when we will mark our 40th anniversary.

And, while our roots are firmly in Tyne and Wear and Northumberland, our refreshed identity as Community Foundation North East recognises that our donors, our funding and our research cover a wider area. But the change doesn't mean diluting current commitments. Instead, we will look to collaborate with partners who have complementary

expertise and resources so together we can build thriving, generous and inclusive communities across the region.

Our work relies on the expertise of our team and dedication of our trustees. Thanks especially go this year to Mark Pierce who retired from his role driving our policy and research work. We also said goodbye to two long-serving board members: Lucy Winkell and Andrew Haigh. Happily, both will remain involved as an honorary Vice President and Corporate Patron respectively. Succeeding them, we are delighted to welcome to the Board Lucia Bridgeman and Dawn Creighton.

The Yearbook highlights our work over the past year and connects to the areas where we want to have impact in the years ahead. As ever, our huge thanks go to everyone who supports our mission and shares our goals for this great region.



**Phil Moorhouse**  
Chair



**Rob Williamson** OBE, DL  
CEO

“

Our new strategy draws on evidence, experience and listening to communities.

## Highlights of the year



Our **On the Table** community conversations engaged nearly 1,000 people in discussing responses to challenges and opportunities in our **Vital Signs** research.



The **Steve and Christine Convey Fund** was established with a major donation from the family's estate to help people find pathways to opportunity and employment.



We received £1m into the **Newcastle Building Society Community Fund** via a second tranche of dormant assets via the scheme with the Reclaim Fund.



We supported the permanent installation of the iconic **Sycamore Gap** tree at its new home at The Sill National Landscape Discovery Centre in Northumberland.



We ran the new **Mayor's Opportunity Fund** in partnership with the North East Combined Authority and Point North.



We launched the **Dynamo Digital Inclusion Fund** at the North East Tech Charity Dinner with the aim of helping people gain confidence in digital technology and create pathways to jobs.



We contributed expertise to the development of the Government's **regional place-based philanthropy strategy** and to its **Social Impact Investment Working Group**.



We brought together philanthropists, businesses, funders with MPs, Lords and civil servants at our first ever event at the **Houses of Parliament** with a focus on bringing opportunity home to our region.

**Left:** Rob Williamson speaking at our event at the Houses of Parliament

**Right:** Artist Charlie Whinney working on his Sycamore Gap installation

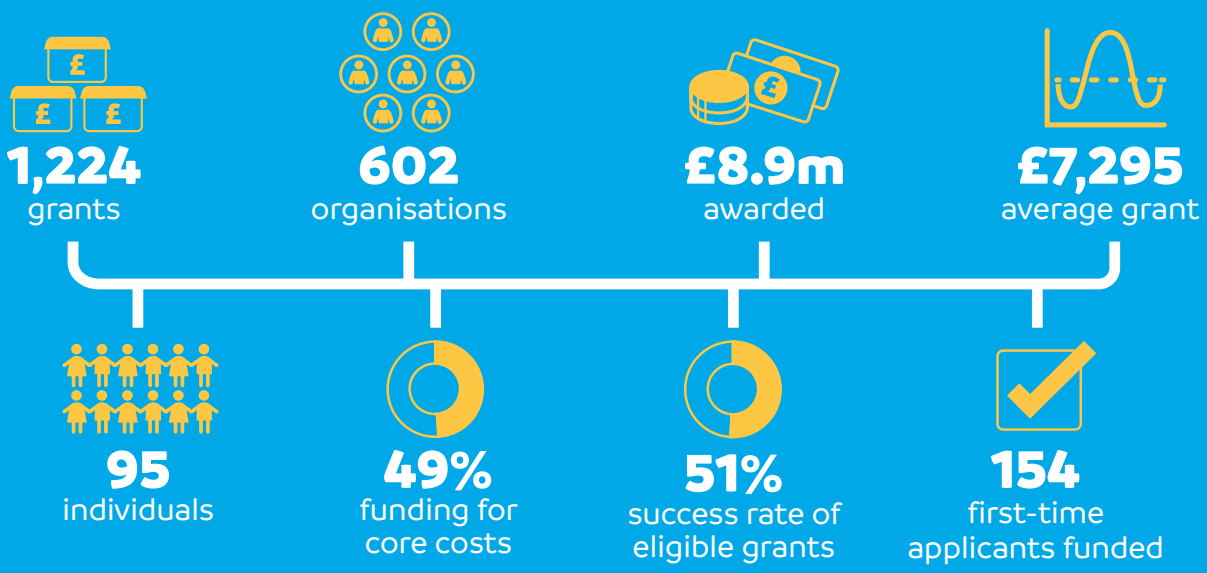


**Thanks to the people and businesses who supported Community Foundation North East this year by partnering on our events and giving their expertise pro bono.**

Accenture	Muckle LLP
ARK Associates	Naylors Gavin Black
Association of Chairs	Newcastle Building Society
Book Direct	Oculus HR
Brewin Dolphin	Peridot Partners
Castle Peake Group	Pitman Training
Charity People	Rule 28
Clive Grey	Sharon Race
Evelyn Partners	Solutions Accountancy
How Might We Community	Ashley Summerfield
Igloo Regeneration	Tecuna
ION Consulting	UNW
Naomi Kinghorn	Ward Hadaway
	Womble Bond Dickinson

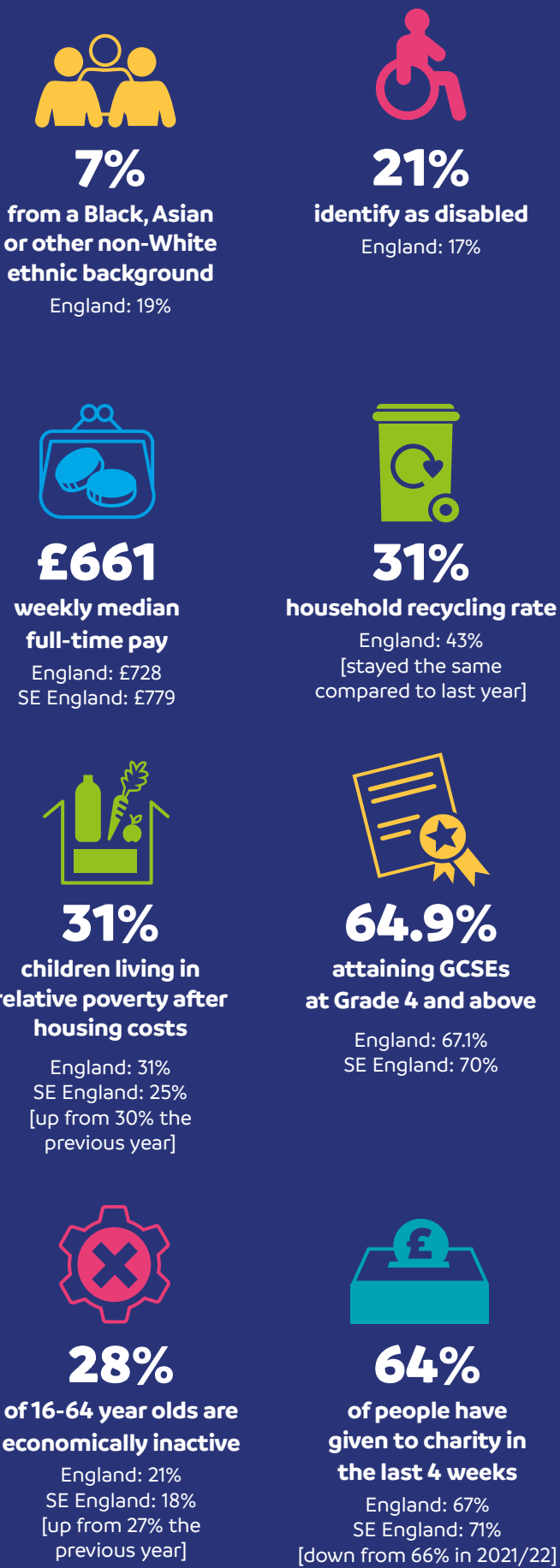
# 2025

## Our facts and figures

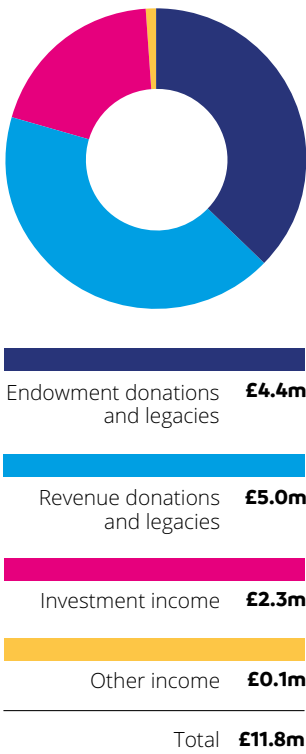


# Our region's Vital Signs

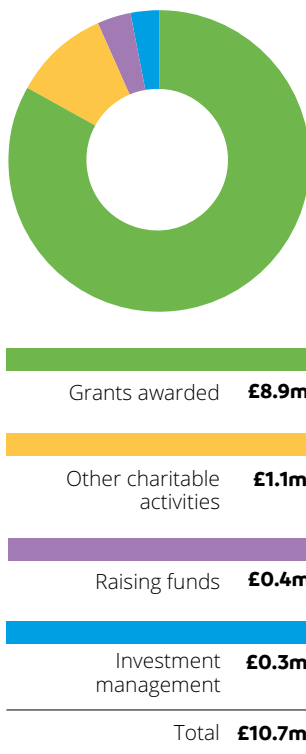
North East England covers **3,350 square miles** and has a population of **2.7m people**.



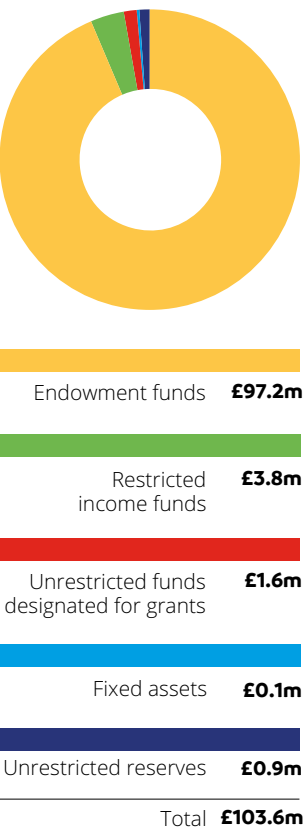
### Our income



### Our expenditure



### Our assets



Our full approved financial statements for the year ending 31 March 2025 are available on our website [www.communityfoundation.org.uk](http://www.communityfoundation.org.uk) or by contacting our office.

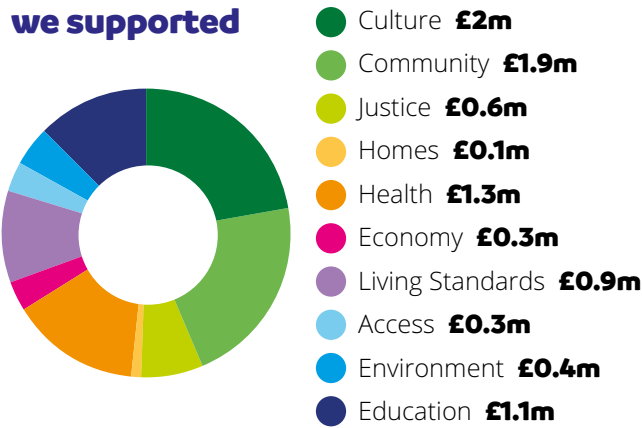


# Impact where it counts

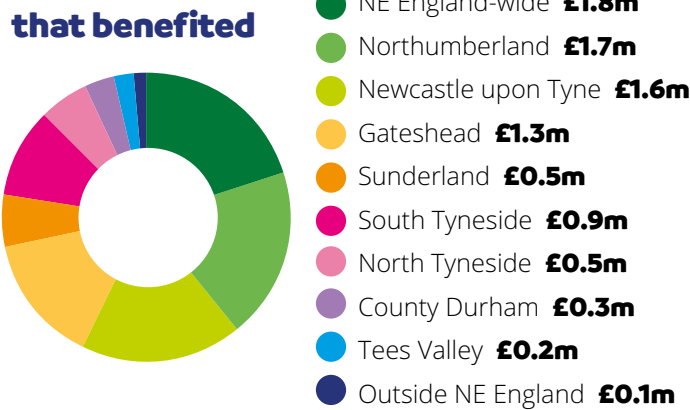
Community Foundation North East enables people and businesses to support communities and causes across our area, focusing on key areas which philanthropy can best address. We strive to have the greatest impact for people and places less well served by charitable funding and those which face prejudice and discrimination.

During the year our funding supported all ten of our Vital Signs themes, and covered our whole region.

### The causes we supported



### The places that benefited



Based on our experience, research and community conversations, we have set out five areas where we aim to have an impact in our strategy from 2025:

- **Tackle poverty** by helping organisations meet basic needs for food, shelter and services, those working to prevent people falling into poverty, and those giving a voice to the people it most affects.
- **Widen access to opportunity** by backing efforts to raise educational attainment and skills, removing barriers to learning, training and jobs, and supporting home-grown talent and local enterprise.
- **Improve health and community safety** by supporting community interventions helping people and places at greatest risk, including healthy living activities, advice and advocacy, counselling, crisis intervention, and preventing re-offending.
- **Strengthen culture and community life** by engaging people in culture for fun as well as for skills and opportunities. And by supporting efforts to grow volunteering and participation and backing community hubs and organisations led by people they serve.
- **Sustain our environment** by helping organisations address the local impact of these global environmental issues and supporting the transition to net zero.

### We gave £3.1m to projects supporting young people aged 12-17:

“The funding received through the Community Foundation is enabling us to target those most at risk of not entering into the workforce, with a particular focus on young adult carers who require bespoke support in developing skills and supporting their wellbeing as they venture into the next stage of their lives. This funding will allow us to make a significant difference to many young carers and young adult carers for the year to come.”  
**Luke Bramhall,**  
Chief Executive, Newcastle Carers

### We gave £600k to projects working with Refugees and Asylum Seekers:

“Grants from the Ringtons Fund and the Watkin Family Fund at the Community Foundation have been crucial to providing the best possible experience for the members of Northumberland County of Sanctuary, making a huge contribution to the welcome we try to provide to people who have come to find sanctuary in Ashington.”  
**Sarah Greaves,**  
Northumberland County of Sanctuary

Left and Right: Day trips out for members of Northumberland County of Sanctuary

71%

of our funding went to organisations in the most deprived half of our postcode areas



# Investing in local organisations

Local charities and community organisations play a vital role in tackling the key challenges in our region. They do brilliant work with modest resources and are the catalyst for millions of hours of volunteer time. Community Foundation North East aims to strengthen their hand through funding and pro bono support.



**76%**  
of the organisations we supported in 2024-25 were in the under £0.5m priority



**244**  
organisations with income under £100,000 received grants



**51%**  
success rate for external applicants



**154**  
organisations were new recipients of our funding



**89%**  
of organisations funded were registered charities



**88**  
organisations benefited from our pro bono support including trustee and skills match

In 2025, 27 grassroots voluntary and community sector organisations in Gateshead received support from Gateshead Council's Thrive Fund run in partnership with Community Foundation North East.

£700,000 funding was allocated in the first of a three-year programme, with priorities agreed in consultation with the sector. They included support for young people with special educational needs and their carers, information and advice in communities, ensuring the voice and views of residents are heard and maximising benefits for people on low incomes. Grant recipients included Chopwell Community Association, Blaydon Youth and Community Centre, The Soundroom Community Music Project and Gateshead Older People's Assembly.

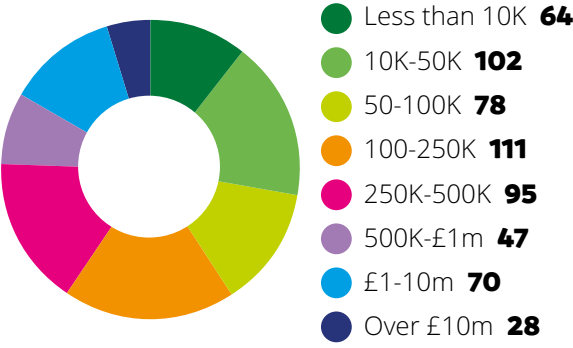
“Accessible support out in our communities makes a huge difference to the health and wellbeing of our residents. We're thrilled that we have been able to provide 27 grassroots organisations up to £30,000 each for a range of projects. These organisations do amazing work, and we can't wait to see how the projects progress over the coming months to support a fairer and thriving Gateshead.”

**Councillor Maria Hall, Cabinet Member for Localities, Communities and Volunteering**

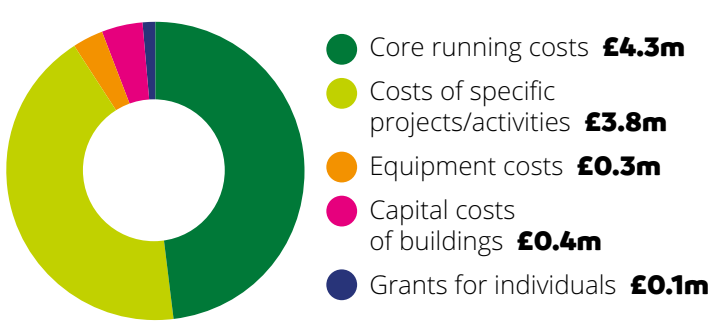
Left: A choir performs at Chopwell Community Centre  
Right: A child draws at Children North East



## Income by number of grantees



## Costs we supported





## Growing giving and philanthropy

Key to the Community Foundation's mission is growing more and better philanthropy to benefit our area's people and places. People and businesses from all walks of life trust us to support and guide them in their giving journey. National data shows a stagnation in the value of charitable donations with an increasing reliance on a smaller pool of donors. So, it has never been more important to grow the giving cake to support causes on the doorstep.

“

During the year, Newcastle Building Society made a £1 million donation to its fund at Community Foundation North East which helps improve lives across the region, by tackling some of the biggest challenges facing communities. The donation boosted the fund's endowment to over £3.5m enabling distribution of around £150,000 every year to charities tackling poverty, barriers to opportunity, debt, homelessness, and sustainability.

“Providing grants to charities supports the organisations working directly with people in need and helps target the key issues in our communities. The Community Fund is one of the most powerful ways we deliver the Society's purpose to connect our communities with a better financial future. Our long-term partnership with Community Foundation North East means we benefit from their unique expertise in maximising returns from the fund and helping direct support to local communities across the region.”

**Andrew Haigh, Chief Executive,  
Newcastle Building Society**

“



In 2025 a major donation from the estate of the late Steve and Christine Convey created a new fund at Community Foundation North East dedicated to helping people find pathways to opportunity and employment. Steve and his brother Peter built Convey Bros into a successful window cleaning business which still thrives today. Christine sadly died in December 2023 and, unfortunately, had already experienced the loss of her husband, Steve, but also their two sons Adam and Lee.

Following Christine's death, the executors of the family estate decided that the assets should be used to help others in the community have the chance to pursue a life of opportunity, especially those who have run into barriers in their lives. The Steve and Christine Convey Fund at Community Foundation North East will provide support to community organisations in perpetuity, including support for young people in the Ponteland area to reflect where the Conveys lived. In its first round of grants, the Fund provided almost £150,000 to five organisations.

“

“There can be no better memorial to Steve and Christine than the creation of the Convey Fund at Community Foundation North East. Every year, the Foundation, advised by Steve and Christine's executors, will distribute grants to organisations supporting intervention work for children, young people, and young adults. The purpose is to broaden their horizons, provide new opportunities, and inspire them onto positive pathways.”

**Richard Roberts, Convey estate executor**



Left: Newcastle Building Society and the Community Foundation celebrate the Society's £1 million donation

Above: Family photos of Steve and Christine Convey



**9**  
new funds  
set up in 2024-25

**£4.7m**

Total donations  
to invested funds



**Top 3**

ways donors were  
introduced to us:

- 1: self-referral
- 2: fund-holder introduction
- 3: staff contact

**£4.9m**

Total donations  
to annual funds



In 2025, the Community Foundation marked six years of the North East Giving Network, with a celebration at Newcastle Cathedral. Giving Network members have collectively supported 24 local charities and community organisations with funding of £113,000.

Inspiration for the Giving Network came from the many people from professional backgrounds – often at an earlier stage of their careers – who care about the region's people and places and wanted to give back, but for whom setting up a fund was not yet the right option. Members commit to donating £30 a month, which the Community Foundation matches. Each year the Giving Network comes together to meet four organisations tackling issues raised in our Vital Signs research. Members then allocate their share of the fund to the organisations they want to support.

The celebration event brought many past recipients together with current and former members of the Giving Network. It was an opportunity to reflect on the work the fund supported and appreciate that £30 a month, when given collectively, can make a huge impact.



# Influencing change and listening to communities

This year we embarked on a major project called On the Table designed to bring people together over food, to make connections and talk about the issues that are important to them, informed by our Vital Signs research.



Our **Vital Signs** reports explore ten themes for donors and funders: economy, education, health, environment, culture, homes, community, justice, living standards and access.



Economy



Education



Health



Environment



Culture



Homes



Community



Justice



Living standards



Access

[www.communityfoundation.org.uk/vital-signs](http://www.communityfoundation.org.uk/vital-signs)

**62** organisations  
**120** conversations  
**1000** participants

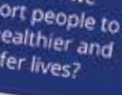
“What more action can we take to address climate change?”



Community sponsored by



Community sponsored by



On the Table is a simple but powerful idea inspired by community foundations in the US and Canada. In Autumn 2024 we invited partners, donors and grantees to host an event, with a toolkit alongside a contribution for food, room hire and any access support.

We encouraged hosts to consider our Vital Signs reports and the issues they explore, to discuss how they are affecting their communities, and what solutions might be.

62 different organisations got involved, hosting 120 separate conversations across the whole of the North East, with nearly 1000 people taking part.

Some discussions were issue-based, including On the Tables focusing on the women's sector, social housing provision, and employment of ex-offenders.

Hosts told us conversations were rich, fruitful and productive in helping identify issues and build connections between people. Feedback from the conversations identified over 50 priorities in communities where philanthropic support can make a difference.

The themes of poverty and inequality featured heavily in the conversations, and there was discussion about the needs of rural communities, experiences of women and girls facing misogyny and abuse, and concerns around online safety.

We also heard clearly the need for the community sector in our region to be better connected, through collaboration and leadership, to enable more impact and move away from competing particularly around funding, when there is so much work to be done in communities.

And we had feedback about the importance of core funding and longer-term support for organisations to keep doing what they do well, without the need for endless innovation.

On the Table has helped Community Foundation North East develop our new strategy, by highlighting issues we need to tackle, and shaping our five new impact areas. It also demonstrated clearly how important core and multi-year funding approaches are in enabling those amazing charities in our region to make a difference to those they work with.

“

“It was a very useful exercise and provided a focus on wider discussion for our organisation that we do not usually have the time to engage in and benefit from”

On the table host

**Left:** An On the Table hosted by Soroptimist International Tynemouth Whitley Bay and District

**Right:** The Community Foundation On the Table event at the Discovery Museum





# Investing responsibly

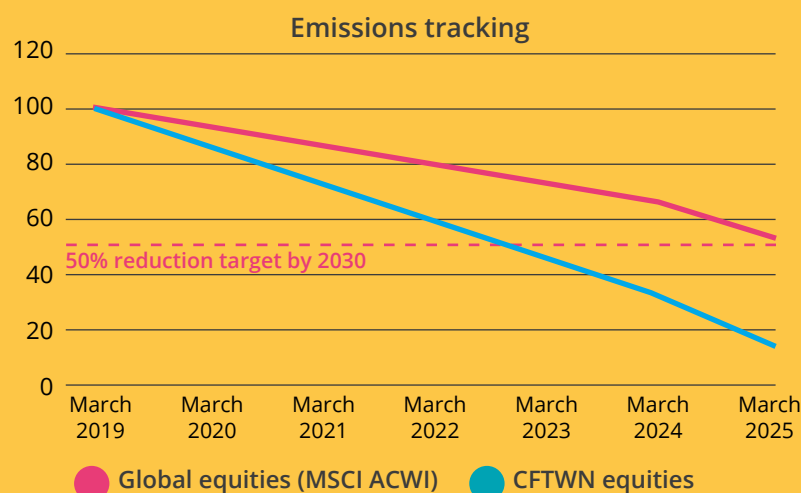
The Community Foundation endowment model means we can provide a permanent funding stream now and in the future. But stewarding our assets also means investing responsibly.

We delegate management of our endowment investments to three firms – Cazenove Capital, CCLA Investment Management Limited and Rathbone Investment Management Limited – whose approach integrates environmental, social and governance factors alongside financial returns. With their support, we report progress against our responsible investment goals.

## Net zero

We seek to align with the UN Paris Agreement and commit to our investment portfolio being net zero by 2050, but with early progress to at least a 45% emissions reduction by 2030.

Data from our managers shows that by 31 March 2025, the carbon emissions of our share portfolio has reduced further to below 20%, well ahead of our 45% target by 2030.



And, in 2025, the carbon footprint of our shareholdings was 72% lower than a comparable benchmark of investments – an improvement on 2024 when we were 48% lower. The difference is equivalent to the annual energy use of 5 homes.



Right: An event hosted at New Writing North

## Examples of engagement by our managers with companies we own.

### Modern slavery – CCLA

Our Modern Slavery UK Benchmark looks at how active companies are in addressing this global issue. The Benchmark supports investor engagement around modern slavery in companies' operations and supply chains, and helps drive improvements in their business practice. We assign companies to one of five performance tiers corresponding with the Independent Anti-Slavery Commissioner's maturity framework. In 2024, we assessed 110 companies and engaged with 67. Importantly, 25 companies improved their score sufficiently to move up one or more performance tiers in the Benchmark.

Responsible investment data is compiled by Cazenove Capital using data shared by all our managers. More information is available from our office.

### Labour standards – Cazenove

The UK social care sector faces persistent challenges including recruitment and retention, staff shortages and concerns over fair pay and working conditions. Recognising the crucial role of care staff in delivering good outcomes for vulnerable people, we engaged with two healthcare Real Estate Investment Trusts (REITs). The focus was on improving labour standards promoting fair pay, safe staffing levels, workforce stability and investment in training. We sought greater transparency on practices and clear policies on staff wellbeing. Our aim is to ensure sustained quality care, while reducing risks, to support responsible investments in the social care sector.

### Climate Change – Rathbones

BP had one of the most ambitious strategies for reducing carbon emissions of any of the major oil and gas firms we invested in. But we had concerns that the company wasn't aligned with the 2015 Paris Agreement on climate change. We met with BP whose management explained why they believed their strategy was in alignment, and who discussed their investment in carbon capture and storage (CCS) on Teesside (a way of preventing carbon emissions from industry getting into the atmosphere). Later, Reuters reported that BP had abandoned plans to cut oil and gas output by 2030, following pressure from large shareholders to fall back into line with the firm's competitors and to move more slowly towards net zero. As a result, we divested our holding of BP in three tranches during 2024.

## Engagement

We expect our investment managers to vote at company AGMs and engage with them on matters important to us and our stakeholders.

226

Number of shareholder resolutions for companies in our portfolio

220

Votes cast by our ISPs

97%

Percentage of resolutions voted on by our ISPs





# Your giving options

Anyone can be a philanthropist by giving money, time and expertise. Community Foundation North East's expert advisors are here to make sure what you choose to do is effective and rewarding.



## Give with others

Through Community Foundation North East, you or your business can give with others to make a bigger difference. Our collective funds cover issues like young people, women, arts and the environment. Others focus on a particular place. We also have initiatives for younger professionals, for companies and for people whose roots are in the region. You can support a current fund or talk to us about new areas where people could come together to give.



## Start your own fund

You can start a charitable fund at Community Foundation North East for you, your family, your business or for a professional client. You can choose to have an **invested fund**, where gifts are held as capital earning income each year to help your chosen causes. Or you can have an **annual fund**, with gifts held as cash to help causes each year. Some people choose a combination of invested and annual funds. For both, we have options to suit how involved you want to be. And you'll get feedback on how you've made a difference.



## Leaving a lasting legacy

You can leave a gift in your Will of any size to help your community for generations to come. An unrestricted legacy gift leaves us the flexibility to support changing needs in the future. You can also leave a gift to support a particular cause or place by adding to a collective fund. Or, with a gift of £10,000 or more in your Will, you can set up your own fund.



## Give time and expertise

As well as funds, we provide opportunities for people to share their expertise pro bono, or to become involved as trustees of local charities.



“

There's a real sense of solidarity in giving to the Women's Fund. We know that every change that's happened for women and girls in the last 200 years, every social step forward that we've made, has come from women working together. And that's really what the women's sector is. The Women's Fund stands alongside the sector and in its small way enables some of that change to happen.”

**Cullagh Warnock**  
Panel Member, The Women's Fund



“

Dynamo set a fund up at the Community Foundation because of the connections they have in the communities we want to work with. Having a fund at the Community Foundation means our Digital Inclusion Fund will really support people and make a difference”.

**Dr David Dunn, Chief Executive, Dynamo**



The Marian Winship Fund was established in March 2024 with a residuary legacy of £84,000 with the purpose of **“improving the quality of life for people of all ages in the North East of England and specifically in the geographic region of South Tyneside”**. The Fund has made its inaugural grants this year. Marian was a strong advocate for South Tyneside and its community, having been a primary school head teacher there, as well as a co-founder of the charity Action Station where she was a trustee and director for many years.

## Donating Cryptocurrency to the Community Foundation

We now accept donations in Bitcoin, Ethereum and many other leading cryptocurrencies. Through our partner, The Giving Block, you can donate crypto securely and tax efficiently and we get the equivalent value in cash. Find out more: [www.communityfoundation.org.uk/give-crypto](https://www.communityfoundation.org.uk/give-crypto)

To find out more about your giving options with Community Foundation North East, call Lisa Cappleman on 0191 222 0945 or email [lc@communityfoundation.org.uk](mailto:lc@communityfoundation.org.uk)



# Our funds

These pages list our current funds by type and donor category.

## Unrestricted funds

Through our unrestricted Strategic Fund, the Foundation responds to our area's most pressing priorities through research, partnerships and initiatives. Donors can support this by making an unrestricted gift of any amount to the Fund, or by setting up an invested fund to resource our strategic work. Unrestricted invested funds can be started with £10,000. Annual unrestricted funds start at £5,000.

### Unrestricted funds set up by individuals and families

Anonymous L Fund	Crozier Fund	Ian and Jane Gregg Fund	Templeton Fund
Crosshatch Fund	Esmée Slattery Fund	Sutherland Fund	Tony Follows Legacy Fund

### Unrestricted funds set up by businesses

Tolent Fund	Tyne Tees Television Fund
-------------	---------------------------

### Unrestricted funds set up by charities/trusts

Greggs Fund	Sir James Knott Trust Fund
-------------	----------------------------

## Collective giving funds

These funds bring together people with a shared interest who want to pool their donations to make a bigger difference to their chosen causes or communities. Collective giving invested funds start with £25,000 or annual funds with £10,000. If donors are involved in recommending grants personally or through a panel, collective giving funds start at £50,000 for endowment or £30,000 for an annual fund.

### Collective Funds

Asian Fund	North East Fund for the Arts (including Pen & Palette Club Fund)	Playschemes Fund	Vital Funds for Northumberland, Newcastle, North Tyneside, Gateshead, South Tyneside and Sunderland (including Community First)
Community Accelerator Funds for Northumberland, Tyneside and Wearside	Northern Angel Fund for Berwick	The Giving Network Fund	Women's Fund (including Community First)
Dawn Brown Fund	Northumberland High Sheriff Awards Fund	The North East Roots Fund	Young Musicians Fund
Local Environmental Action Fund		Tyne and Wear High Sheriff Fund (including Community First)	

## Operating funds

These funds support the costs of our charitable activities. Named operating endowment funds can be started with £10,000. One-off or annual gifts of any amount can be made at any time to support our work.

### Operating Funds set up by individuals and families

Brian Lewis Fund	Ronald Edward William Murray Fund
------------------	-----------------------------------

### Operating Funds set up by charities and trusts

Hadrian Trust Fund
--------------------

## Field-of-interest funds

These donors use funds to support a particular place or cause but without being hands on with their giving. We select groups that match their interests and whose work aligns with our impact areas. Field-of-interest endowment funds can be started with £25,000. Annual field-of-interest funds start at £10,000.

### Funds set up by individuals and families

Anne and David Parker Fund	George and Peggy Fund	Langley Family Fund	The Edwin John Easydorchik Travelling Scholarship Fund
Brian and Margaret Thompson Fund	George Loggie Fund	Linden Family Funds (including Community First)	The HunterPemberton Community First Fund
Burnell Community First Fund	Godfrey Mallett Fund <b>NEW</b>	Marian Winship Fund	The Lawrence Campbell Community First Fund
Burnell Family Fund	Grigor McClelland Fund (including Community First)	Nash Fund	The Muriel Campbell Fund
Carrie Reay Grassroots Fund	Hillside Fund	Pamela Denham Grassroots Fund	The P Z Fund
Christopher Beadle Fund	Ivy and Gilbert Purvis Fund	Prime Fund	The Temple Fund
Cynthia Hoare Fund	JesDesStaff Fund	Riverbank Fund	Tyne & Wear Grassroots Fund
Daisy Marr Fund	Josephs Family Fund	Rod and Rosemary Taylor Family Fund	Winter Family Fund
Express Enterprise Fund	June King Fund	Sandra King Rainy Day Fund	
Fausta and Rosemary Community First Fund	Kellett Fund	Spriggs Family Fund (including Community First)	
FB & PFB Lough Fund	Lady Betty and Sir Lawrence Martin Fund		

### Funds set up by businesses

Akzo Nobel International Paint Fund (includes Community First)	Canford Audio Fund	North East Brewers Fund	Rolls-Royce Fund
	John Laing Fund	Northumberland Group Fund	Vaux Fund
	JPMorgan Fund		

### Funds set up by charities and trusts

Abbot Memorial Fund	Coquet Fund	Lady Noble Memorial Fund	Roland Cookson Community Fund
Ashington Community Development Trust Fund	Dickon Trust Fund	Newcastle Dispensary Relief in Sickness Fund	Rose Joicey Fund
Chapman Fund	John Bell Fund	North Tyneside Fund	RW Mann Fund
Community Investment Fund	Joseph Brough Charitable Trust Fund		

## Donor-advised funds

These donors are actively involved with their funds by choosing groups to support based on our research and the requests we receive. They can also nominate charities and set up a fund advisory panel. Donor-advised invested funds can be started with £50,000. Annual donor-advised funds start at £30,000.

### Funds set up by individuals and families

Abigail and Stephen Crampton Fund	Anonymous R Fund	Carroll Savage Fund	Elgon Fund
Adderstone Fund	Appletree Fund	Caru Fund	Emma Newton Fund
Adrian and Ingrid Gifford Fund	Barnes Fund	Chrysalis Fund	Evangelical Fund
AJM Fund	Barry and Faga Speker Fund	Curtin PARP Fund	Fogo Fund (including Community First)
Alan Morse Grassroots Fund	Bellingham Fund	Daphne and Martin Cookson Fund	Geoffrey and Ann Purves Fund
Alison and Michael Gallico Fund <b>NEW</b>	Blackett Family Community First Fund	David and Gitta Faulkner Fund	Groves Family Fund
Andrew and Charlotte Dixon Fund	Brian Roycroft Fund including the Tessa Hide Fund	Dream Jar Fund	Guy Readman Endowment Fund
	Carolyn and Tony Brookes Fund	Duncan and Sarah Davidson Fund	Henderson Family Fund



Heyman Travelling Scholarships Fund	Michael and Christine Heppell Fund	Riding Grange Grassroots Fund	Ted Weekes Fund
Hoult Family Funds (including Community First)	Milburn Briel Fund	Robinson Fund	Tess Fund
I'Anson Family Fund	Nancy Barbour Award Fund	Ron and Louise Bowey Funds (including Community First)	The Edwin Easydorchik Travelling Scholarship Fund
If Only... Fund	NEF Grassroots Fund	Sara Alexandra Bernstone Fund	The Hokey Cokey (that's what it's all about) Funds (including Community First)
Jackie Haq Fund	North East Endowment for Musical Traditions Fund	Shingley Family Fund	The Louise Dalton Fund
John and Barbara Sadler and Jeanette Henderson Fund	Out and About Fund	Shobha and Triloki Srivastava Grassroots (including Community First)	The Lucy Winskell Fund
John D Endowment Fund	Pamela and Dorothy Denham Fund (including Community First)	Sir Tom Cowie Fund	The Pea Green Boat Community First Fund
Johnnie and Tricia Smith and Family Fund	Patch Fund	Smail Family Fund	Thornton Family Grassroots Fund
Kerry Funds (including Community First)	Percy Family Fund	Sowler Family UK Charitable Fund	Three Valleys Fund
Leech Challenge Fund	Platten Family Fund (including Community First)	Speke Family Fund	Treeline Fund
Lendrum Family Community First Fund	Proudfoot Family Fund	Star Fund	Vicky F Grassroots Fund
Margaret and Dorothy Gordon Memorial Fund	Readman Family Grassroots (including Community First)	Stephen Byers Fund	Watkin Family Fund
Mark and Ian Wilson Family Fund	Readman Foundation Fund	Steve and Christine Convey Fund <b>NEW</b>	Weightman Fund
Matthew Ridley Fund	Reeds Funds (including Community First)	Storey Family Grassroots Fund	Welch Family Fund
Maudslay Family Fund	Riddell Family Community First Fund	Sue Wilson Fund	Wide Open Road Fund
McIntosh Fund		Suz Grassroots Fund	William Leech Charity Fund
			Willis Charitable Fund

Funds set up by businesses

Amec Legacy and Futures Fund	Fergusons of Blyth Fund	Northern Powergrid Fund	Ringtons Fund (including Community First)
Bellway Fund	Muckle Fund	Northumbrian Water Fund	RWE Renewables Kiln Pit Hill Wind Farm Community Benefit Fund
EDF RE Blyth Offshore Demonstrator Wind Farm Community Benefit Fund	Nadara Sisters and North Steads Wind Farm Community Benefit Fund	Opencast Charitable Fund	Squires Foundation Fund
EDF RE Green Rigg Wind Farm Community Benefit Fund	Naylors Gavin Black Fund	P&G Fund	Virgin Money Endowment Fund
EDF RE Barmoor Wind Farm Community Benefit Fund	Newcastle Building Society Community Fund	Pattinson Estate Agents Fund	Ward Hadaway Fund
	Northern Gas Networks Community Partnering Fund	Port of Tyne Community Action Fund	
		PricewaterhouseCoopers Fund	

Funds set up by charities and trusts

Barley Hill Fund	David Dockray's West End Young People's Fund (including Community First)	Latterford Fund	The George Cringle Scholarship Fund
Berwick Academy Endowment Fund	FARNE Fund	Northumberland Village Homes Trust Fund	The Pargiter Trust Fund
Bill and May Hodgson Fund	Frederick Milburn Fund	Robert Wood Trust Fund	Wellesley Trust Fund (including Community First)
Capt. C.D. Leyland Fund	G S May Family Fund	Sunderland Industrial and Reformatory School Fund	
Charles Robert Bell Fund	Joyce Trust Fund	The 1989 Willan Charitable Trust Fund	
CrecheMobile Fund			

Designated funds

These donors select one or more charities a year to support from their funds. We make sure the organisations benefiting stay on track. Designated invested funds can be started with £25,000. Annual designated funds start at £20,000.

Funds set up by individuals and families

C H Wood Fund	Jane Robertson Alnwick Fund	Joy Higginson Fund for Children North East	St Cuthbert's Fund
David Goldman Awards Fund	Jeremy Beecham Schools Fund	Moor Fund	Stuart Ayre Fund
Frank Acfield Fund			Taylor Fund

Funds set up by businesses

Bonas Machine Company Fund

Funds set up by charities and trusts

Allison Greenlees Continuation Fund	Bird Fund	Roland Cookson Fund
	Carr-Ellison Charitable Trust	

Agency invested funds

These charities have funds at the Foundation which provide continuing income for their work. Agency invested funds can be started with £100,000.

Chronicle Sunshine Fund	Northumberland Wildlife Trust Fund	Tiny Lives Fund
Enid Blyton Fund for Seven Stories	Prudhoe League of Friends Fund	The Glasshouse International Centre for Music Fund

Foundation projects and partnerships

These are the Foundation's own knowledge and leadership projects, and the programmes we run in partnership with other funders regionally and nationally.

Community Chest Fund – in partnership with Gateshead Council	North East Social Investment Fund – in partnership with Better Society Capital, Esmée Fairbairn, Joseph Rowntree and Northstar Foundations	The Mayor's Opportunity Fund <b>NEW</b> – in partnership with NECA and Point North	The South Tyneside Know Your Neighbourhood Fund – in partnership with DCMS and UKCF
Newcastle Culture Investment Fund - in partnership with Newcastle Council	Participatory Grant-making Fund – Black, Asian and minoritised ethnic communities	The NECA NE Economic Inactivity Trailblazer Fund <b>NEW</b> – in partnership with NECA and Point North	Third Sector Trends Study
NHS North East and North Cumbria Northern Cancer Alliance and Waiting Well Funds – in partnership with Cumbria Community Foundation and Point North	Sector Support Fund	The Sir George Earle Benevolent Fund – in partnership with UKCF	
	The Community Infrastructure Levy (CIL) Fund in partnership with Gateshead Council		

We also provide expertise and advice to the Bernicia Foundation and Ridley Family Charity.

Right: Dry stone walling with Natural Ability





## Our people

### Honorary President:

His Grace the Duke of Northumberland

### Honorary Vice-Presidents:

Anna, Lady Blackett  
Rt Revd Dr Helen-Ann Hartley  
Geoff Hodgson OBE  
Dr Caroline Pryer LL  
Dr Hari Shukla CBE DCL DL  
Dr Shobha Srivastava MBE  
Hugh Welch  
Sue Winfield CVO OBE CStJ  
Lucy Winkell OBE LL  
Mike Worthington OBE

### Patrons:

Dame Margaret Barbour DBE DL  
Ron and Louise Bowey  
Professor Nicola Curtin  
Tony and Anne Platten  
Lyn Shears OBE  
Sir Nigel Sherlock KCVO OBE

### Corporate Patrons:

Newcastle Building Society  
P&G  
Ringtons

### Legacy Patrons:

Steve and Christine Convey  
Douglas Kellett  
Frank and Pat Lough  
Ronald William Edward Murray  
Guy Readman OBE  
Trevor Shears OBE

### Top right:

Staff team standing from front left: Colette Harrison, Lisa Cappleman, Hannah Mackay-Christie, Michelle Hardie, Su Legg

From middle left: Ross Wilson, Megan Hardiman, Elaine Holdsworth, Jo Cundall, John Hollingsworth, Beverley Timlin, Mike Whitfield, Jacqueline Turner.

From back left: Alastair Walker, Rob Williamson, Sarah Phillipson, Adam Smith, Adam Lopardo, Nils Stronach, Pete Barrett, Ged Robinson.

### Below:

A cookery session at the Comfrey Project

## Our trustees



**Phil Moorhouse**

**Chair:**  
Non-executive director  
and business investor



**Jill Baker**

**Deputy Chair:**  
Director of Communities,  
Lloyds Bank Foundation



**Paul Farquhar**

**Treasurer:**  
Retired company  
director and accountant



**Lucia Bridgeman DL**

Falldon Estate;  
Deputy Lieutenant of  
Northumberland



**Michael Brodie CBE**

Chief Executive,  
NHS Business  
Services Authority



**Dawn Creighton**

Head of Customer  
Strategy and Experience,  
Northumbrian Water



**Sarah Glendinning**

Director of Business  
Partnerships,  
Northumbria University



**Colin Hewitt**

Client Relationship  
Director, Ward Hadaway



**Claire Malcolm MBE**

Chief Executive,  
New Writing North



**Stella Simbo**

Digital Inclusion Health  
and Social Care Project  
Manager, Connected  
Voice



**Pam Smith**

Chief Executive,  
Newcastle City Council



**Fiona Standfield**

Chief Operating Officer,  
Diocese of Hexham  
and Newcastle



**Dr Laura Warwick**

Senior Service  
Designer, NHS Business  
Services Authority

We are grateful for the support of our volunteer ambassadors and panel members. We encourage individuals, voluntary organisations, public bodies and businesses to become involved in our network as members.

## Our staff

### Senior executives

**Rob Williamson OBE DL**  
Chief Executive

**Adam Lopardo**  
Chief Funding and  
Partnerships Officer

**John Hollingsworth MBA**  
Chief Philanthropy and  
Development Officer

**Sonia Waugh FCCA**  
Chief Finance and Operating Officer

### Philanthropy and development

**Lisa Cappleman**  
Head of Giving and Philanthropy

**Elaine Holdsworth**  
Senior Philanthropy Advisor

**Su Legg**  
Senior Philanthropy Advisor

**Ross Wilson**  
Senior Philanthropy Advisor

**Michelle Hardie**  
Philanthropy and  
Development Advisor

**Kevin Maloney**  
Philanthropy and  
Development Advisor

**Meg Hardiman**  
Development and Marketing Officer

### Funding and partnerships

**Nils Stronach**  
Head of Grant Practice  
and Programmes

**Pete Barrett**  
Senior Programme Advisor

**Jo Cundall**  
Senior Programme Advisor (Culture)

**Hannah Mackay-Christie**  
Senior Policy and  
Public Affairs Advisor

**Ged Robinson**  
Grant Programme Advisor

**Colette Harrison**  
Sector Support Manager

**Beverley Timlin**  
Funding Officer

### Operational support

**Mike Whitfield**  
Head of Operations

**Dawn Porter**  
Executive Support Manager

**Ali Walker**  
Projects and Resources Manager

**Sarah Phillipson**  
Finance Officer

**Adam Smith**  
ICT and Facilities Officer

**Leanne Wilson**  
Grant Support Officer

**Jacqueline Turner**  
Office Co-ordinator

