



Community
Foundation

Yearbook 2023

Backing the
brilliant work of
local charities



Serving Tyne & Wear and Northumberland
communityfoundation.org.uk

Welcome from the Chair and CEO

The Community Foundation's vision is to see communities thrive across North East England, with fairness and generosity changing lives and helping everyone feel they belong.

Our mission is to grow giving and philanthropy, enabling people and businesses to support vital causes. We combine our knowledge and reach with donors' generosity to back hundreds of local charities and community organisations each year that make a lasting difference.

We could not do what we do without the people, businesses and other bodies who set up or contribute to our funds. Since we were established in 1988, we have awarded nearly £165 million in grants. We are the largest community foundation by asset size of 47 in the UK, something about which our region can be very proud.

And we remain firmly committed to building more local philanthropy, and to the endowment model, which sees donors' gifts invested to benefit people right now, and for generations to come. Our endowment is a vital community asset which we proudly steward and nurture, knowing it will be there to benefit our area no matter the priorities of the government of the day. That said, there is much that governments could do to incentivise more long-term philanthropy (for example through the release

of dormant financial assets). But we won't wait for others to get on with the job.

The past year has seen rising inflation and a cost-of-living crisis that has made a bad situation worse for the poorest and most vulnerable people. Thanks to our donors, we have played our part in responding. But there is much more to do. Our region has great strengths, not least its vibrant charitable sector and 1,000+ year history of generosity. To build on that, pathways to opportunity must be broadened, and efforts redoubled to give communities the essential support they need to thrive.



Phil Moorhouse
Phil Moorhouse, Chair



Rob Williamson
Rob Williamson, CEO



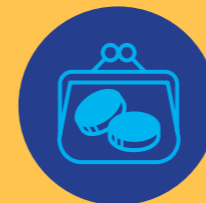
“

“Since we were established in 1988, we have awarded nearly £165 million in grants...”

Highlights of the year



Gus, Lord O'Donnell, former Cabinet Secretary, gave the keynote speech at our first in-person annual meeting since 2019 and highlighted the critical role of charities and philanthropy in **addressing poverty** and supporting the levelling up agenda.



We established a Cost-of-Living Fund to support local charities and community organisations facing increased demand and costs. With the support of new and existing donors, **£385,000 was awarded to 65 grantees.**



We signed up to the *UK's Funder Commitment on Climate Change* and implemented our new responsible investment policy, recognising the **growing climate emergency** and our responsibility to support transition to a low-carbon economy.



We launched the latest *Third Sector Trends* report in London. Having started in the North East and Cumbria 15 years ago, the research has expanded to other regions. Now, for the first time, the data **covers the whole of England and Wales.**



We published our independent survey showing what grant applicants think of the Community Foundation. The overwhelming majority of respondents saw us as having a **positive impact** on them and their communities.



60 people with a passion for the region but who don't currently live here attended our first London event to launch the **North East Roots Fund** which will enable our area's diaspora to give back.

Bottom left: Students enjoying a climate change awareness workshop organised by Cap-a-Pie Engagements Ltd.

Top Right: Lord O'Donnell, making the keynote speech at our AGM in 2022.

Bottom right: Beneficiaries at St Martin's Centre Partnership in Byker.



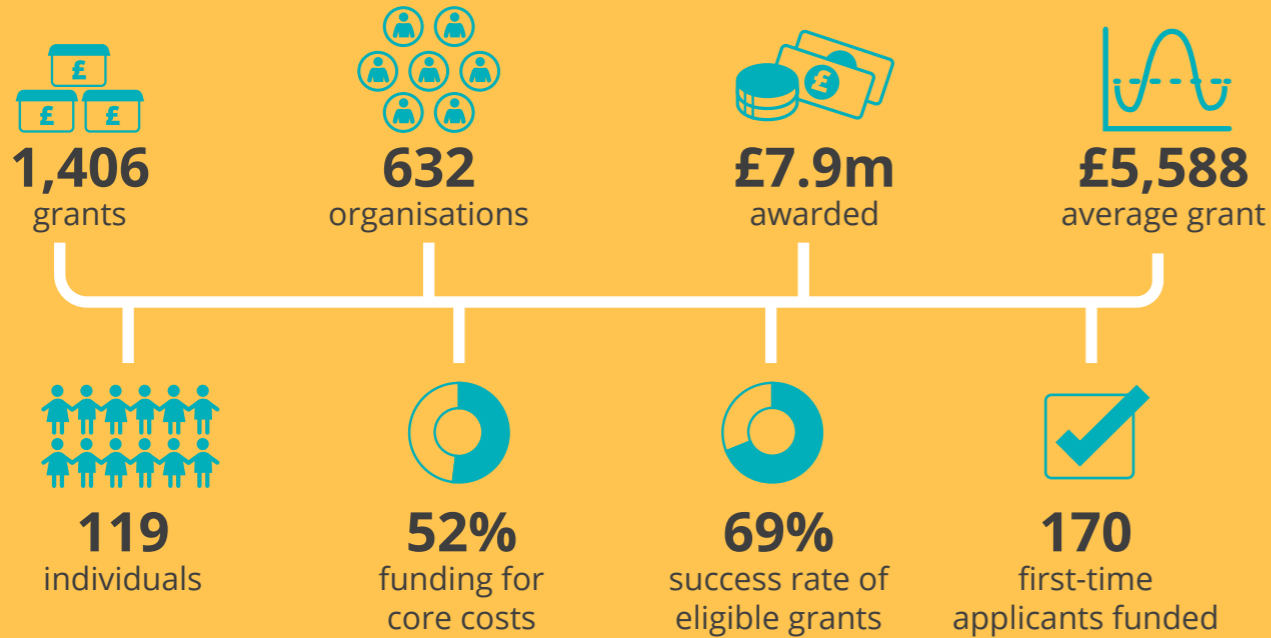
Thanks to the people and businesses who supported us by partnering at our events and giving time pro bono this year.

- | | |
|----------------------|----------------------------|
| Fenwick Lycetts | Inspire South Tyneside |
| The Mercers' Company | CVA Northumberland VCAS |
| Muckle LLP | Gateshead Volunteer Centre |
| Newcastle University | Connected Voice |
| Alan Ross | Muckle LLP |
| 50:50 Futures | |

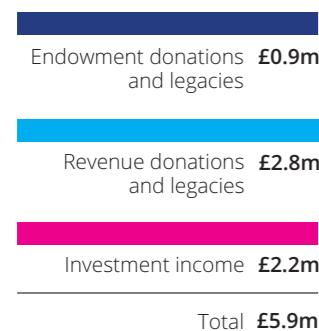
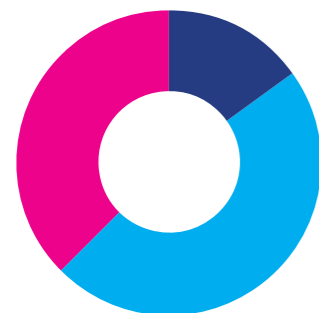


2023

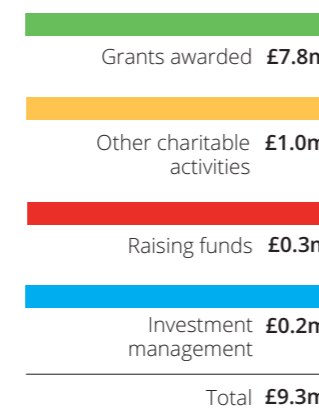
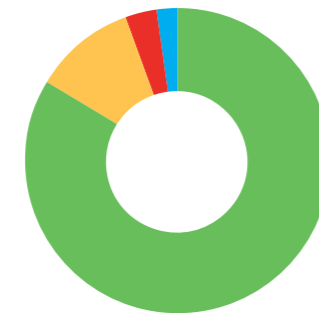
Our facts and figures



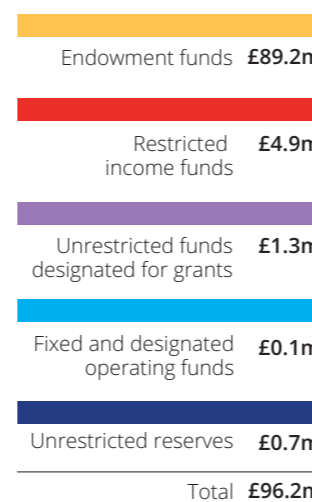
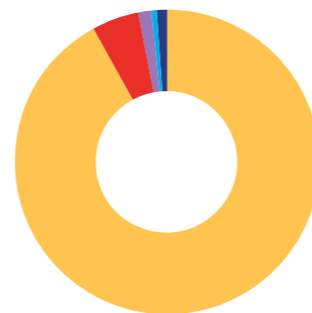
Our income



Our expenditure



Our assets



Our full approved financial statements for the year ending 31 March 2023 are available on our website www.communityfoundation.org.uk or by contacting our office.

Our region

...covers **3,350 square miles** and has a population of **2.65m people**. It has **6,922 third sector organisations**, with **37,300 employees** and **152,100 regular volunteers**.



96% of residents live in households where English is the main language (England: 89%)



91% identify as Straight or Heterosexual, 1.6% as Gay or Lesbian and 0.3% as Trans (England: 89.4%, 1.5% and 0.3%)



21% of residents report as disabled under the Equality Act (England: 17%)



10% of residents aged 5 or over are care providers (England: 9%)



78% of people in the North East report high or very high satisfaction with their lives (England: 80%)



51% of adults are in work (England: 56%)



Gross earnings in the North East are **15%** lower than the English average



31% of adults have either basic or no qualifications (England: 28% SE England: 25%)



11% of workers are in unskilled occupations (England: 11%, SE England: 9%)



67% of residents are homeowners (England: 62%)

Ethnicity

	North East	England
Asian, Asian British or Asian Welsh	3.7%	9.6%
Black, Black British, Black Welsh, Caribbean or African	1%	4.2%
Mixed or Multiple ethnic groups	1.3%	3%
White	93%	81%
Other ethnic group	1%	2.2%

Religion

	North East	England
None	40%	36.7%
Christian	50.8%	46.3%
Buddhist	.3%	.5%
Hindu	.4%	1.8%
Jewish	.2%	.5%
Muslim	2.7%	6.7%
Sikh	.3%	.9%
Other / not specified	5.4%	6.6%

Helping communities thrive

North East England is a fantastic place, with a warm welcome, vibrant culture and beautiful landscape. But we face challenges. Poverty, poorer health and a lack of good employment affect many of our people and places. So, the Community Foundation backs small, local charities and community organisations which bring people together to help themselves and others, ensuring everyone belongs and has the chance to succeed. In 2022-23 we awarded 1,406 grants to 632 organisations and 119 individuals.



Bottom left: A performance at Stockton Arts Centre.

Bottom middle: Opening the new garden at LD:NorthEast.

Top right: Helix Arts 'Real Voices' project.

Most Community Foundation grant-making in 2022-23 benefitted the whole community in a place, often those where people experience poverty or rural isolation. We targeted other funding to benefit younger or older people, or other demographic groups experiencing disadvantage or discrimination, as shown in the table.

£1.5m	Children aged 5-11
£2.1m	Teenagers 12-17
£1.9m	Young people 18-24
£1.3m	Older people
£1.1m	Disabled people
£0.4m	Women
£0.4m	Refugees and asylum seekers
£0.3m	People from Black, Asian or non-White ethnic backgrounds
£0.1m	Lesbian, gay, bisexual or transgender people

79%

of our funding went to organisations in the most deprived half of our post-code areas [IMD, 2019]

One organisation supported during the year used gardening to improve people's mental and physical health. North Tyneside-based LD:NorthEast received a grant from the P&G and Prime Funds at the Community Foundation to offer gardening groups and health workshops targeting men with learning disabilities and autism.

“

“The men that attend the group benefit from being amongst peers and feeling valued as part of a team. We have delivered health workshops in the gardening sessions as we find the informal setting helps the men to open up and discuss otherwise difficult subjects. We've also been able to build a summer house and a working garden where we are growing herbs, fruit and vegetables that can be used in our healthy cooking sessions.”

Danielle Falcus, LD:NorthEast



The causes we supported



- Arts culture and heritage **£1.9m**
- Environment **£0.2m**
- Fairness and inequality **£1.4m**
- Healthy living **£1.7m**
- Housing and homelessness **£0.1m**
- Learning **£0.9m**
- Safety **£0.1m**
- Strong communities **£1.3m**
- Work **£0.3m**

The places that benefited



- NE England-wide **£1.3m**
- Tyne & Wear-wide **£0.1m**
- Gateshead **£0.7m**
- Newcastle upon Tyne **£1.7m**
- North Tyneside **£0.5m**
- South Tyneside **£0.6m**
- Sunderland **£0.6m**
- Northumberland **£1.9m**
- County Durham **£0.2m**
- Tees Valley **£0.2m**
- Outside NE England **£0.1m**



Focusing on vital issues

For the Community Foundation, our growing endowment gives us an independence as a charitable funder. But being independent doesn't mean being neutral. We are firmly on the side of our area's people and places, and we're here to tackle the issues affecting them most. That's meant a major focus on the rising cost of living and how it is making a bad situation even worse for people in poverty.

Our **Vital Signs report** on the crisis described how North East England is particularly vulnerable to increases in the cost of living because of lower financial resilience, lower-paid jobs and higher unemployment. We set out how philanthropy could make a difference by

- helping people, families and communities in crisis
- supporting community organisations as they face rising demand and costs
- building long-term resilience through better skills and workforce development

www.communityfoundation.org.uk/vital-signs

Centre:
A young person taking part in the Summer Playscheme at Peace of Mind in Gateshead.

Bottom right:
Surfing lessons for Three Colours Theatre Summer Playscheme.



The Community Foundation set up a **Cost-of-Living Fund** to support charities and community organisations helping people most affected by the cost-of-living crisis. The focus was on those facing greater demand at the same time as rising costs. With backing from our unrestricted funds, existing donors, plus other businesses, individuals and funders, helped us grow the pot, taking the total to nearly £400,000. The Fund supported 65 organisations in autumn and winter 2022-23 with core funding to address issues including rent rises, higher utility bills, staff and volunteer costs, increased requests for help, providing warm spaces and more crisis support.

School holidays are a time when many families on low incomes struggle to keep children fed. Holiday hunger undermines health and means children return to school behind their peers. Playschemes that provide food alongside activities address these issues. The Community Foundation has encouraged donors to support holiday playschemes since first highlighting their impact in our 2019 Vital Signs report on food poverty. This year, we launched a co-ordinated programme of funding, bringing together contributions from many of our funds.

“

“The grant enabled us to reach a larger group of people than usual over the summer as we weren't limited to a restricted criteria. It has means we have been able to help families who are on the edge of 'just managing' during the financial crisis.”

Grace House, Sunderland



£528

average weekly wage in the North East compared to £606 in England as a whole



£21,165

the average value of household savings in the North East compared with **£41,469** in the South East



154,403

number of food parcels given by Trussell Trust network food banks in the North East in 2022-2023



35%

the number of children living in poverty in the North East

Supporting organisations to succeed

Small, local charities and community organisations are the glue that brings people and places together. While most philanthropic funding in the UK goes to big-name charities, at the Community Foundation, our aim is to be a trusted and effective funder of grassroots organisations that make a difference locally. While small charities are defined as having income under £1m, we prioritise those with incomes under £0.5m.



73%

of the organisations we supported in 2022-23 were in the under £0.5m priority



81%

of organisations we funded were registered charities



101

organisations benefited from our pro bono support including trustee and skills match services

£50k

Support from the Community Foundation as a proportion of organisation's income is higher the smaller the organisation. Organisations we funded in 2022-23 with turnover under £50,000 got on average 20-30% of their income from us.

Right: Visit to Lowick Heritage Group's archaeological dig.



The 2022-23 data from the Community Foundation's Third Sector Trends Study shows that in North East England:



There are **6,900** charities and community organisations with total income of **£1.5bn**



They have **37,300** paid staff – **3.1%** of regional employment



There are **over 150,000** regular volunteers contributing **c. 11 million hours** of volunteer time worth the equivalent of **£146m** at average regional wages



51% of board chairs and **60%** of chief officers are women; around **6%** of each are from Black, Asian and ethnic minority backgrounds



Over 70% say grants are their most important income

www.communityfoundation.org.uk/third-sector-trends

During the year, the Community Foundation commissioned nfpResearch to run an independent and confidential survey of grant applicants. 357 organisations responded, and 10 contributed in-depth interviews. The overwhelming majority saw us as supportive, helpful and fair, and thought we had a positive impact on them and their communities.

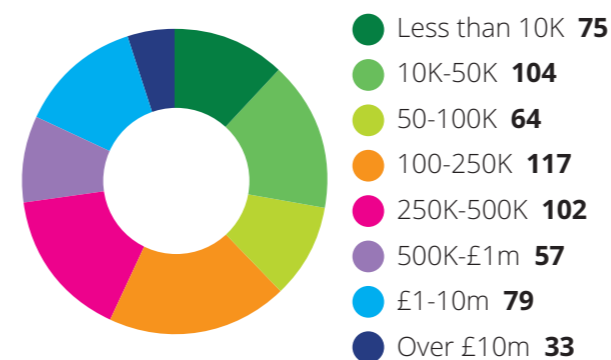
“

[The Community Foundation] understands what we are about and what we are trying to do in supporting our community. It's a go-to place for friendly advice and support, and gives quick decisions when they are needed the most. It feels as if we are asking friends for help.”

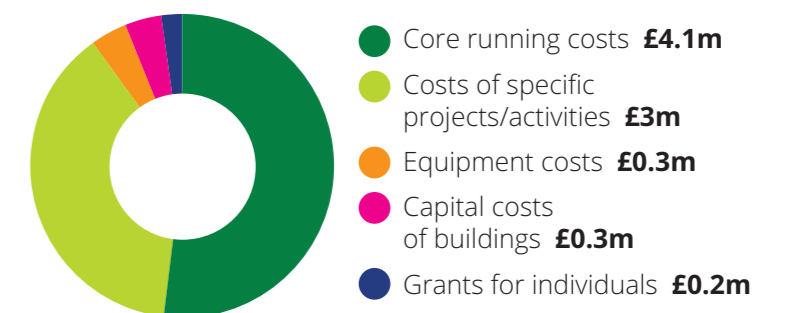
Survey respondent

The survey also highlighted some areas to improve around accessibility to first-time applicants, and information about non-grant support on offer. It was also clear that organisations had missed opportunities for personal contact with us during the pandemic, so we have planned a renewed programme of in-person events and visits.

Income by number of grantees



Costs we supported



Growing giving and philanthropy

There is no shortage of people and businesses that want to make a difference locally. But many struggle to know where to start. For 35 years, the Community Foundation has matched generous people with important community causes. With our world facing ever greater challenges, in the past year we've redoubled our efforts to develop more and better philanthropy to benefit our area.

Some people and businesses choose to give with others through the Community Foundation so they can make a bigger difference. Knowing there are many people with a passion for our region but who aren't currently living here but who'd like to give back, this year we set up a new **North East Roots Fund**. Our long-term aim is to raise at least £1m through a collective Fund that will help create pathways to opportunity, provide community essentials and support the region's culture and environment. Over 60 people attended our launch event hosted by Fenwick at its London Bond Street Store. The first grants from the Fund are expected to be made in late 2023 and there will be more opportunities for people outside the region to get involved.

www.communityfoundation.org.uk/northeastroots

During the year, Professor Nicola Curtin marked a milestone of providing £100,000 in grants from the **Curtin PARP Fund** which she set up at the Community Foundation in 2019 with royalties from an anti-cancer drug she helped to develop. Nicola's gifts were invested, meaning her philanthropy will keep benefiting people for generations to come.

Supporting people interested in careers in environmental work has been a recent priority. Through a grant to Groundwork South and North Tyneside, the Fund has supported three young people to complete nationally recognised vocational qualifications and gain practical experience. All three have gone on to gain employment in the environmental sector.



"I am so grateful to the Community Foundation in facilitating this milestone achievement. The purpose of the fund is to help people who are at a disadvantage reach their full potential and I am delighted with the number of success stories the fund is generating."

Professor Nicola Curtin

Nicola was recognised for her lifetime achievements by the Educate North Awards, noting her contribution to both science and philanthropy through the Curtin PARP Fund.

People and businesses from all walks of life continued to choose the Community Foundation for their giving in 2022-23. During the year, new funds set up through the generosity of donors and partners included these invested within the Foundation's endowment.

- **The Joyce Trust Fund:** set up following a transfer of assets from a family charitable trust, the Fund promotes social inclusion, including addressing unemployment, financial hardship, ill-health, education and skills, housing and crime.

- **The Naylor's Gavin Black Fund:** set up by the property firm's partners to support grassroots projects across Tyne & Wear and Northumberland, with a focus on priority issues and places identified through our Vital Signs research.

- **The Riverbank Fund:** set up by an individual anonymous donor to support smaller charities and community organisations across Tyne & Wear and Northumberland addressing homelessness, the environment and the arts.



Right: Community Foundation donor, Irene Dorner, speaks at the North East Roots Fund launch event.



10
new funds
set up in 2022-23



Top 3
ways donors were introduced to us:
1: self-referral
2: fund-holder introduction
3: staff contact



£0.9m
Total donations
to invested funds



£2.8m
Total donations
to annual funds

Investing in people, place and planet

Who we are as an organisation is as important as what we do at the Community Foundation. We have a special perspective as a funder seeking to make a difference now and for generations to come, while remaining accountable to our communities.

The Community Foundation model means **giving lasts forever**, because we invest donations and ensure their value grows, providing a permanent funding stream now and in the future. But stewarding these assets effectively is also about investing responsibly in line with our purpose, mission and values.

This year, after consultation with donors, grant recipients and other stakeholders, we adopted a new policy applying environmental, social and governance lenses to our endowment. And we made a commitment to our investment portfolio being net zero by 2050 at the latest, but with the wish to see early progress towards at least a 45% emissions reduction by 2030. We also joined the Funder Commitment on Climate Change, signalling that we'll play our part in tackling the causes and impacts of climate change.

45%

...we made a commitment to our investment portfolio being net zero by 2050 at the latest, but with the wish to see early progress towards at least a 45% emissions reduction by 2030



Above: Tree planting at West End Women and Girls Centre smallholding at Fallowless Farm.

Top right: A performance at Northern Roots 'Songs of Freedom' event.

“

The Community Foundation model means giving lasts forever, because we invest donations and ensure their value grows...



One of the ways the Community Foundation seeks to address **equity and inclusion** is by publishing data on the diversity of our staff and trustees to show how far we reflect our area's communities. Our most recent statistics are in the table below.

	Benchmark	Our board	Our staff
01 Gender	50% women: 50% men	54% women: 46% men	46% women: 54% men
02 Disability	20% self-identify as disabled	0%	9%
03 Ethnicity	At least 7% from a Black, Asian or other non-White ethnic background	8%	4%
04 Sexual orientation	At least 3% identify as gay, lesbian or bisexual	0%	8%
05 Socio-economic background	63% from intermediate or working-class backgrounds	34%	42%

Find out more: www.communityfoundation.org.uk/about-us/diversity-equity-and-inclusion/

Our members

- Voluntary organisations **202**
- Public bodies **19**
- Businesses **26**
- Individuals **271**



Engagement is in our DNA at the Community Foundation through an **open membership** of over 500 people and organisations which keeps us grounded and acts as the cornerstone of our accountability. Members bring diverse lived and learned experience to our work as well as playing a key role in our governance including on our Board of trustees.

Find out more: www.communityfoundation.org.uk/about-us/membership

Our funds

These pages list our active funds in 2022-23 by type and donor category.

Vital community funds

Through our unrestricted Vital Community Fund the Foundation's trustees have the flexibility to tackle the region's most pressing issues now and in the future. We also have dedicated Vital Funds (established with Community First match) for each of our local areas. Donors can choose to establish an unrestricted named fund which supports the Vital Community Fund or one of the area funds. Or they can make an unrestricted gift of any amount at any time to one of the existing funds.

Collective giving funds

These funds bring together people with a shared interest who want to pool their donations to make a bigger difference to their chosen causes or communities. Collective giving endowment funds start with £25,000 or annual funds with £10,000. If donors are involved in recommending grants personally or through a panel, collective giving funds start at £50,000 if invested or £30,000 for annual funds.

Operating funds

These funds support the costs of our charitable activities. Named operating invested funds can be started with £10,000. One-off or annual gifts of any amount can be made at any time to support our work.

Named Vital Funds set up by individuals and families

Anonymous L Fund	Mitford Fund for Northumberland
Crosshatch Fund	Sutherland Fund
Crozier Fund	Templeton Fund
Esmée Slattery Fund	Tony Follows Legacy Fund
Ian and Jane Gregg Fund	

Named Vital Funds set up by businesses

Tolent Fund	Tyne Tees Television Fund
-------------	---------------------------

Named Vital Funds set up by charities/trusts

Greggs Fund	Sir James Knott Trust Fund
-------------	----------------------------

Collective Funds

Asian Fund	Playschemes Fund
Community Accelerator Fund NEW	The Giving Network Fund
Coronavirus Response and Recovery Fund	The North East Roots Fund NEW
Cost-of-Living Fund	Tyne and Wear High Sheriff Fund (including Community First)
Dawn Brown Fund	Vital Funds for Northumberland, Newcastle, North Tyneside, Gateshead, South Tyneside and Sunderland (including Community First)
High Sheriff of Northumberland Awards Fund	Women's Fund (including Community First)
Local Environmental Action Fund	Young Musicians Fund
North East Fund for the Arts (including Pen & Palette Club Fund)	
Northern Angel Fund for Berwick	

Operating Funds set up by individuals and families

Ronald Edward William Murray Fund

Operating Funds set up by charities and trusts

Hadrian Trust Fund

Field-of-interest funds

These donors use funds to support a particular place or cause but without being hands on with their giving. Invested field-of-interest funds can be started with £25,000. Annual field-of-interest funds start at £10,000.

Below top:
St Oswald's Hospice activity day.

Below bottom:
Cramlington Voluntary Youth Project.



Funds set up by individuals and families

Anne and David Parker Fund	Langley Family Fund
Brian and Margaret Thompson Fund	Linden Family Funds (including Community First)
Carrie Reay Grassroots Fund	Nash Fund
Christopher Beadle Fund	Pamela Denham Grassroots Fund
Daisy Marr Fund	Prime Fund
Express Enterprise Fund	Riverbank Fund NEW
Fausta and Rosemary Community First Fund	Rod and Rosemary Taylor Family Fund
FB and PFB Lough Fund	Sandra King Rainy Day Fund
George and Peggy Fund	Spriggs Family Fund (including Community First)
George Loggie Fund	The Burnell Family Funds (including Community First)
Grigor McClelland Fund (including Community First)	The HunterPemberton Community First Fund
Hillside Fund	The Lawrence Campbell Community First Fund
Ivy and Gilbert Purvis Fund	The Muriel Campbell Fund
JesDesStaff Fund	The P Z Fund
Josephs Family Fund	The Temple Fund
June King Fund	Tyne & Wear Grassroots Fund
Kellett Fund	Winter Family Fund
Lady Betty and Sir Lawrence Martin Fund within the North East Fund for the Arts	

Funds set up by businesses

Akzo Nobel International Paint Fund (includes Community First)	North East Brewers Fund
Canford Audio Fund	Northumberland Group Fund
Enviresearch Fund	Port of Tyne Community Action Fund
John Laing Fund	Rolls-Royce Fund
JPMorgan Fund	Vaux Fund

Funds set up by charities and trusts

Abbot Memorial Fund	Lady Noble Memorial Fund
Ashington Community Development Trust Fund	Newcastle Dispensary Relief in Sickness Fund
Chapman Fund	North Tyneside Fund
Coquet Fund	Roland Cookson Community Fund
Dickon Trust Fund	Rose Joicey Fund
John Bell Fund	Roseline Foundation Fund
Joseph Brough Charitable Trust Fund	RW Mann Fund

Donor-advised funds

These donors are actively involved with their funds by choosing groups to support based on our research and the requests we receive. Invested donor-advised funds can be started with £50,000. Annual donor-advised funds start at £30,000.

Funds set up by individuals and families

Abigail and Stephen Crampton Fund	Matthew Ridley Fund
Adderstone Fund	Maudslay Family Fund
Adrian and Ingrid Gifford Fund	McIntosh Fund
AJM Fund	Michael and Christine Heppell Fund
Alan Morse Grassroots Fund	Milburn Briel Fund
Andrew and Charlotte Dixon Fund	Nancy Barbour Award Fund
Anonymous R Fund	NEF Grassroots Fund
Appletree Fund	North East Endowment for Musical Traditions Fund
Barnes Fund	Out and About Fund
Barry and Faga Speker Fund	Pamela and Dorothy Denham Fund (including Community First)
Bellingham Fund	Patch Fund
Blackett Family Community First Fund	Percy Family Fund
Brian Roycroft Fund including the Tessa Hide Fund	Platten Family Fund (including Community First)
Carolyn and Tony Brookes Fund	Proudfoot Family Fund
Carroll Savage Fund	Readman Family Grassroots (including Community First)
Chrysalis Fund	Readman Foundation Fund
Curtin PARP Fund	Reeds Funds (including Community First)
Daphne & Martin Cookson Fund	Riddell Family Community First Fund
David and Gitta Faulkner Fund	Riding Grange Grassroots Fund
Dream Jar Fund	Robinson Fund
Duncan and Sarah Davidson Fund	Ron and Louise Bowey Funds (including Community First)
Elgon Fund	Sara Alexandra Bernstone Fund
Emma Newton Fund	Shibley Family Fund
Evangelical Fund	Shobha and Triloki Srivastava Grassroots (including Community First)
Fogo Funds (including Community First)	Sir Tom Cowie Fund
Geoffrey and Ann Purves Fund	Smail Family Fund
Groves Family Fund	Sowler Family UK Charitable Fund
Guy Readman Endowment Fund	Speke Family Fund
Henderson Family Fund	Star Fund
Heyman Travelling Scholarships Fund	Stephen Byers Fund
Hoult Family Funds (including Community First)	Storey Family Grassroots Fund
l'Anson Family Fund	Sue Wilson Fund
If Only... Fund	Suz Grassroots Fund
Jackie Haq Fund	Ted Weekes Fund
John and Barbara Sadler and Jeanette Henderson Fund	Tess Fund
John D Endowment Fund	The Edwin John Easydorchik Travelling Scholarship Fund
Johnnie and Tricia Smith and Family Fund	The Hokey Cokey (that's what it's all about) Funds (including Community First)
Kerry Funds (including Community First)	The Louise Dalton Fund
Leech Challenge Fund	
Lendrum Family Community First Fund	
Margaret and Dorothy Gordon Memorial Fund	
Mark and Ian Wilson Family Fund	

The Lucy Winkell Fund	Watkin Family Fund
The Pea Green Boat Community First Fund	Weightman Fund
Thornton Family Grassroots Fund	Welch Family Fund
Three Valleys' Fund	Wide Open Road Fund
Treeline Fund	William Leech Charity Fund
Vicky F Grassroots Fund	Willis Charitable Fund

Funds set up by businesses

Bellway Fund	P&G Fund
EDF RE Blyth Offshore Demonstrator Wind Farm Community Benefit Fund	Pattinson Estate Agents Fund
EDF RE Green Rigg Wind Farm Community Benefit Fund	PricewaterhouseCoopers Fund
EDF RE Barmoor Wind Farm Community Benefit Fund	Ray WindFarm CIC Small Grants Programme Fund
Fergusons of Blyth Fund	Ringtons Funds (including Community First)
Muckle Fund	RWE Renewables Kiln Pit Hill Wind Farm Community Fund
Naylor's Gavin Black Fund	Squires Foundation Fund
Newcastle Building Society Community Fund	Thorne and Derrick Fund
Northern Gas Networks Community Partnering Fund NEW	Ventient Sisters and North Steads Wind Farm Community Benefit Fund
Northern Powergrid Fund	Virgin Money Endowment Fund
Northumbrian Water Fund	Ward Hadaway Fund
Opencast Charitable Fund	Wood Fund

Funds set up by charities and trusts

Barley Hill Fund	Latterford Fund
Berwick Academy Endowment Fund	North East Cultural Learning Fund
Bill and May Hodgson Fund	Northumberland Village Homes Trust Fund
Capt. C.D. Leyland Fund	Robert Wood Trust Fund
Charles Robert Bell Fund	Sunderland Industrial and Reformatory School Fund
CrecheMobile Fund	The 1989 Willan Charitable Trust Fund
David Dockray's West End Young People's Fund	The George Cringle Scholarship Fund
FARNE Fund	The Pargiter Trust Fund
Frederick Milburn Fund	Wellesley Trust Funds (including Community First)
G S May Family Fund	
Joyce Trust Fund NEW	

Below top: Barnabas Safe and Sound presenting at the Giving Network Giving Event.
Below bottom: Easington Lane Community Access Point.



Designated funds

These donors select one or more charities a year to support from their funds. We make sure the organisations benefiting stay on track. Invested designated funds can be started with £25,000. Annual designated funds start at £20,000.

Funds set up by individuals and families

C H Wood Fund	Joy Higginson Fund
David Goldman Awards Fund	Moor Fund
Frank Acfield Fund	St Cuthbert's Fund
Jane Robertson Alnwick Fund	Stuart Ayre Fund
Jeremy Beecham Schools Fund	Taylor Fund

Funds set up by businesses

Bonas Machine Company Fund

Funds set up by charities and trusts

Allison Greenlees Continuation Fund	Carr-Ellison Charitable Trust Fund
Bird Fund	Roland Cookson Fund

Agency Endowment Funds

Chronicle Sunshine Fund	The Glasshouse International Centre for Music Fund
Enid Blyton Fund for Seven Stories	Tiny Lives Fund
Northumberland Wildlife Trust Fund	
Prudhoe League of Friends Fund	

Agency invested funds

These charities have funds at the Foundation which provide continuing income for their work. Agency invested funds can be started with £100,000.

Foundation projects and partnerships

These are the Foundation's own knowledge and leadership projects, and the programmes we run in partnership with other funders regionally and nationally.

Foundation projects and partnerships

#iwill Fund - in partnership with the National Lottery, Department for Digital Culture Media & Sport and UK Community Foundations	Participatory Grant-making Fund - Black, Asian and minoritised ethnic communities
Arts Council England Let's Create Jubilee Fund	Participatory Grant-making Fund - Sunderland
Growth and Resilience Fund - in partnership with County Durham Community Foundation, Northstar Foundation and the Mercers' Company, with support from a private family donor	The Community Infrastructure Levy (CIL) Fund in partnership with Gateshead Council
Newcastle Culture Investment Fund - in partnership with Newcastle Council	The South Tyneside Know Your Neighbourhood Fund in partnership with DCMS and UKCF
North East Social Investment Fund - in partnership with Big Society Capital, Esmée Fairbairn, Joseph Rowntree and Northstar Foundation	Third Sector Trends Study
	We also provide expertise and advice to the Bernicia Foundation and Ridley Family Charity.

Bottom: Cramlington Voluntary Youth Project outdoor activities.



Your giving options

Anyone can be a philanthropist and the Foundation's team of expert advisors is here to make sure that whatever option you choose, your giving is effective and rewarding.



Give with others

Through the Community Foundation, you can give with others to make a bigger difference. Our collective funds cover issues like young people, women, arts and culture and the environment. Others help a particular part of our area. We also have giving initiatives for younger professionals, for companies of all sizes and for people whose roots are in our region. You can support a current fund or talk to us about new areas where people could come together to give.

Start your own fund

You can start a charitable fund with us for yourself, your family, your business or a professional client. You can set up an invested fund, where gifts are held as capital earning income each year to help your chosen causes. Or you can have an annual fund, with gifts held as cash to help causes each year. Some people choose a combination of invested and annual funds. For both, we have options to suit how involved you want to be. And you'll get regular feedback on how you've made a difference.

Leaving a lasting legacy

You can leave a legacy gift in your Will of any size to help your community for generations to come. An unrestricted gift leaves us the flexibility to support changing needs in the future. You can also leave a gift to support a particular cause or area through our collective giving funds. Or, with a gift of £10,000 or more in your Will, you can set up your own named fund.

To find out more about your giving options, call Lisa Cappleman on 0191 222 0945 or email lc@communityfoundation.org.uk

Our people

HONORARY PRESIDENT

His Grace the Duke of Northumberland

HONORARY VICE-PRESIDENTS

Lord Beecham
Lord Beith
Fiona Cruickshank OBE
Dr Hari Shukla CBE DCL DL
Dr Shobha Srivastava MBE
Hugh Welch
Sue Winfield CVO OBE CSTJ
Gill Winter
Mike Worthington OBE

PATRONS

Dame Margaret Barbour DBE
Ron and Louise Bowey
Professor Nicola Curtin
Tony and Anne Platten
Lyn Shears OBE
Sir Nigel Sherlock KCVO OBE

CORPORATE PATRONS:

Newcastle Building Society
P&G
Ringtons

LEGACY PATRONS:

Douglas Kellett
Frank and Pat Lough
Ronald William Edward Murray
Guy Readman OBE
Trevor Shears OBE



Our trustees



Phil Moorhouse
Chair:
Non-executive director
and business investor



Lucy Winskell
Deputy Chair:
Lord Lieutenant
of Tyne & Wear



Paul Farquhar
Treasurer:
Company director
and accountant



Jill Baker
Director of Communities,
Lloyds Bank Foundation



Michael Brodie
Chief Executive,
NHS Business
Services Authority



Sarah Glendinning
Regional Director, CBI



Andrew Haigh
Chief Executive,
Newcastle Building
Society



Colin Hewitt
Senior Partner,
Ward Hadaway



Claire Malcolm
Chief Executive,
New Writing North



Stella Simbo
Volunteer Co-ordinator,
Success4All CIO



Pam Smith
Chief Executive,
Newcastle City Council



Fiona Standfield
Chief Operating Officer,
Diocese of Hexham
and Newcastle



Laura Warwick
Senior Service
Designer, NHS Business
Services Authority

Patrick Melia retired from the Board in October 2023.

Our staff

SENIOR EXECUTIVES

Rob Williamson
Chief Executive
Sonia Waugh
Chief Finance and Operating
Officer and deputy CEO
John Hollingsworth
Chief Philanthropy Officer
and deputy CEO
Adam Lopardo
Director of Community
Relations

POLICY AND RESEARCH

Mark Pierce
Associate Director of Policy
and Research

PHILANTHROPY

Lisa Cappleman
Head of Giving and Philanthropy
Elaine Holdsworth
Senior Philanthropy Advisor
Su Legg
Senior Philanthropy Advisor
Ross Wilson
Senior Philanthropy Advisor
Michelle Hardie
Philanthropy Advisor
Kevin Maloney
Philanthropy Advisor

COMMUNITY RELATIONS

Nils Stronach
Head of Grant Practice
and Programmes
Pete Barrett
Senior Programme Advisor
Jo Cundall
Senior Advisor, Culture
Hamish Carter
Grant Programme Advisor
Colette Harrison
Development Officer,
Sector Support
Ali Walker
External Relations Officer
Ged Robinson
Funding Co-ordinator

OPERATIONAL SUPPORT

Mike Whitfield
Head of Operations
Dawn Porter
Executive Support Officer
Sarah Phillipson
Finance Co-ordinator
Adam Smith
ICT and Facilities Co-ordinator
Emma Holmes
Grant Process Co-ordinator
Jacqueline Turner
Office Administrator

Top right:

Staff team – standing from front left: Elaine Holdsworth, Jo Cundall, Mike Whitfield, Adam Smith, Nils Stronach, Adam Lopardo, Rob Williamson, Ged Robinson, Hamish Carter, Michelle Hardie, Colette Harrison, Sonia Waugh, Su Legg.

Seated from front left:

John Hollingsworth, Ross Wilson, Jaqueline Turner, Sarah Phillipson, Mark Pierce, Ali Walker, Kevin Maloney, Lisa Cappleman

We are grateful for the support of our volunteer ambassadors and panel members. We encourage individuals, voluntary organisations, public bodies and businesses to become involved in our network as members.

Advisors

Auditors: Azets Audit Services

Bankers: Barclays Bank plc

Investment Managers: Cazenove Capital, CCLA Investment Management Limited, Rathbone Investment Management Limited.

Solicitors: Muckle LLP

Financial information and grant statistics in the Yearbook relate to the financial year 2022-23. All other information has been update to the time of going to press in October 2023.

Design and artwork: Lisa Kirkbride

Photography: Gilbert Johnston Photography, Northumberland National Park Foundation, Mark Savage Photography, St Martin's Centre Partnership, Three Colours Theatre, Educate North Awards, St Oswald's Hospice, Cramlington Voluntary Youth Project, Easington Lane Community Access Point, Victoria Wai and West End Women and Girls Centre.

Cover image: Young people take part in activities as part of the 'Lost Spells – Lost Words' interactive exhibition run by Northumberland National Park Foundation.

Community Foundation serving Tyne & Wear and Northumberland

Philanthropy House
Woodbine Road
Gosforth
Newcastle upon Tyne
NE3 1DD

T: 0191 222 0945

E: general@communityfoundation.org.uk

communityfoundation.org.uk

🐦 @CFTyneWearNland

f CommunityFoundationTyneWearNorthumberland

in cftynewearnland

Registered Charity No. 700510
Limited Company No. 2273708
Details of the Community Foundation's
Privacy Policy can be found on our website.

